

DRAWING NUMBER

REVISION  
20/18

AMPROVED DRAWING  
SCALE TO BE MAINTAINED BY REPRODUCER  
THIS DRAWING IS THE PROPERTY OF THE ENGINEER  
AND IS NOT TO BE REPRODUCED OR COPIED WITHOUT HIS WRITTEN CONSENT

AMPROVED DRAWING  
SCALE TO BE MAINTAINED BY REPRODUCER  
THIS DRAWING IS THE PROPERTY OF THE ENGINEER  
AND IS NOT TO BE REPRODUCED OR COPIED WITHOUT HIS WRITTEN CONSENT

18

APPROVED Nov. 23, 1942

BOARD OF COMMISSIONERS  
PALM BEACH COUNTY, FLA.

By *E. T. Holmes*  
Assistant County Engineer

STATE OF FLORIDA  
COUNTY OF PALM BEACH  
His 30th day of November 1942  
20  
By *Myra B. Merrill*, D. C.

# GULFSTREAM PARK

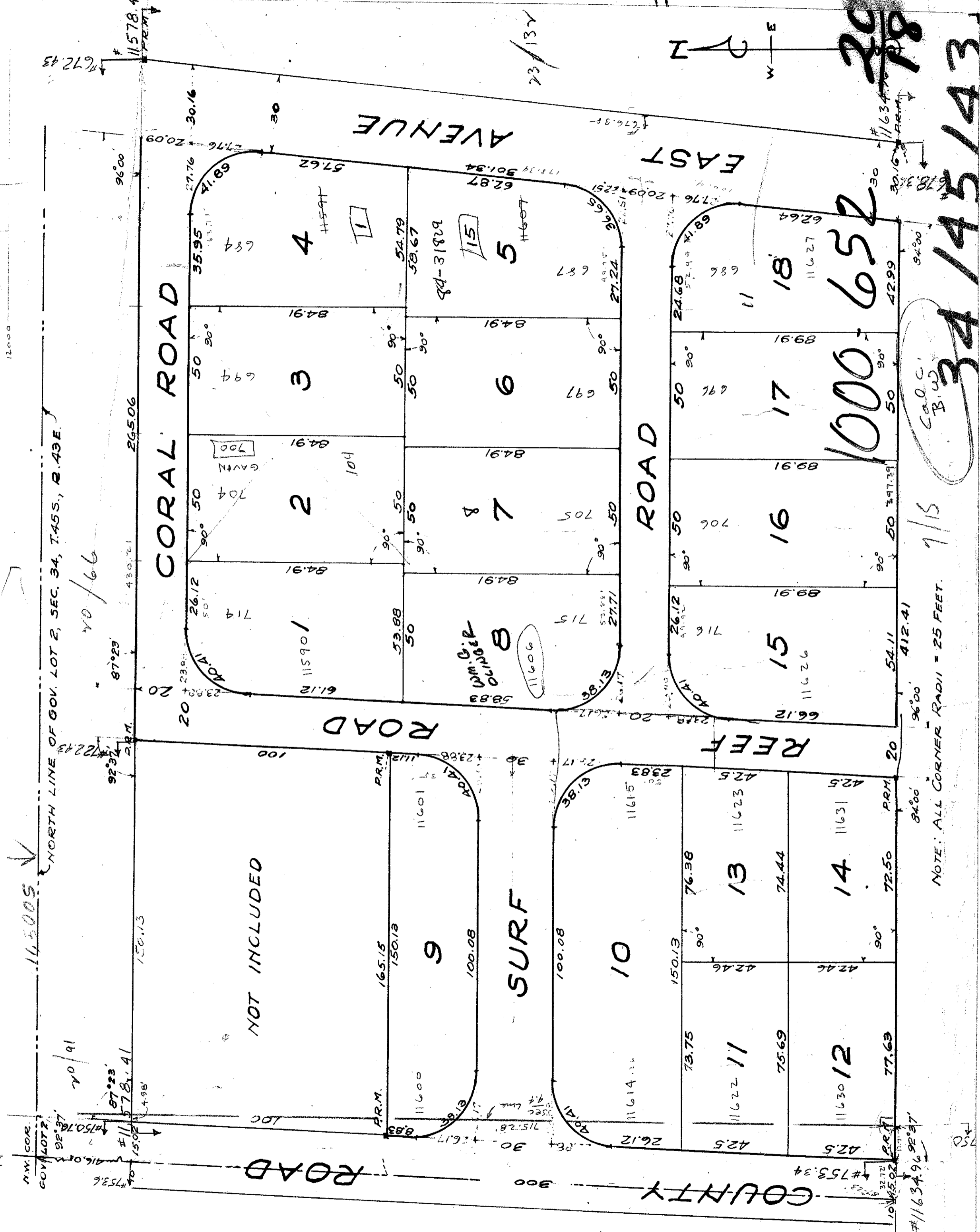
## IN GOV. LOT 2, S.34, T.45 S., R.43 E.

### PALM BEACH COUNTY, FLORIDA,

B. W. MITCHELL, OWNER

H. C. FUGATE, SURVEYOR

SCALE 1 IN.=30 FT. MARCH 1942



NOTE: ALL CORNER RADI = 25 FEET.

1000-652

78

1/15

34 145 143